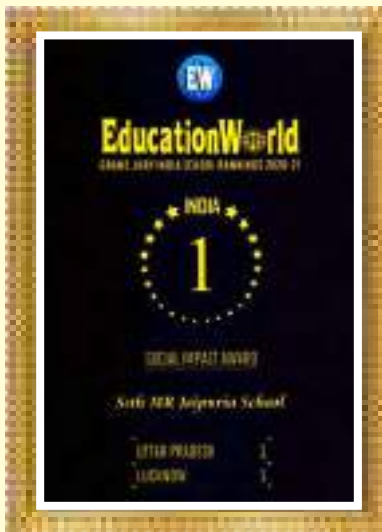
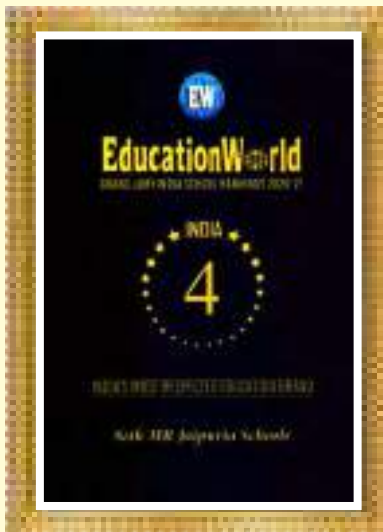


“ I AM  
JAIPURIAN ”

I AM THE BEST I CAN BE

# Awards, Recognition & More





**THE REWARD  
FOR WORK WELL DONE  
IS THE OPPORTUNITY  
TO DO MORE //**

## *Message from the Chairperson*



**I**t gives me great pleasure to welcome you to Seth M.R. Jaipuria School, Bansal Campus. Bansal Education Trust came into existence on 11<sup>th</sup> December, 2007 to promote and provide the best educational facilities for the young children of Lucknow. I am indeed filled with pride when I see the progress we have made in this direction. Seth M.R. Jaipuria School has as its motto a continued search for knowledge and information, and share the received wisdom with the community to selflessly serve mankind. We have diligently developed our academic philosophy by laying great emphasis on the pursuit of knowledge, its application and skills to help in its dissemination. Our underlying philosophy is to create new benchmarks by incorporating new initiatives in the field of education through modern and innovative teaching and learning methodologies.

Our quest for excellence is incessant, our service ceaseless and our perseverance untiring. Imparting right knowledge, enhancing wisdom and creating distinctive individuals is and has always been our pursuit. Today we stand at the threshold of a new era - an era empowered by new learning, new technology and new methodology. Even as we prepare to ride the waves of change, our foundations are built on solid rock, firmly anchored on strong life principles. We pride ourselves in not only being an institution imparting holistic education, but also instilling core human values in all our learners. We shall always endeavour to provide the best that education has to offer.

*Come and feel the joy of learning at Bansal Campus!*

**Girja Shankar Agarwal**  
Chairman

## Message from the Vice Chairman



*“Our highest endeavour must be to develop individuals who are able, out of their own initiative, to impart purpose and destination to their lives.” Rudolf Steiner*

**W**e at Seth M.R. Jaipuria School, Bansal Campus create life by making each and every moment spent on the campus worthwhile in terms of learning and gaining experience. It gives me immense pleasure to welcome you to Seth M.R. Jaipuria School, Bansal Campus. Our motto has since the very beginning been to endeavour for nothing but the best, and we strive to give our students the best by way of infrastructure, learning, life skills and co-scholastics. The school imparts holistic education, to turn out learners who will always be an asset to society, to the country and to the world. Our mission is to cultivate in our students love of learning, love of their fellow human beings and love of their surroundings.

Education at Bansal Campus is not just limited to academics, but includes an array of skills that will make our students fit for every arena of life. Our infrastructure, our curriculum, our team of mentors are all tailor made for this very purpose. Learning is not just a lifelong process but is also a joyful one. Our campus is designed to provide that joy of learning so that the process may easily be incorporated by our learners as a lifelong one. Bansal Campus reaches out to each and every one of you!

**Devesh Agarwal**  
Vice-Chairman

## *From the Principal's Desk*



Let me begin with what I firmly believe in: *Education is not preparation for life, education is life itself.* We at Seth M R Jaipuria School, Bansal Campus, concur to the magnitude of this statement and strive to impact the lives of the students under our fold, with positive and transforming learning experiences. The holistic intervention in education is imperative at every growth phase of the student. We are thus constantly striving to provide a conducive environment to create a balance in the academic, emotional, spiritual, creative and physical development of students; our focus is not merely academic and scholastic achievement, but also character building. This helps us to deliver the quality of the highest standards and also helps us provide a firm foundation for the holistic development of our students. The learning environment in our classrooms is also aimed at teachers being sensitive to the various needs of the different learners. This provides an atmosphere where the learning interaction inside & outside the classroom is done with a lot of understanding and sensitivity.

We believe that in today's world where change is constant and fast paced, we, as educators, need to adapt to the continuous innovative and improvised models and trends in education. We provide continuous training to our staff in order that they may be agents of qualitative and holistic transformation in the lives of the students who pass through the portals of Bansal Campus. We continuously strive for excellence in the field of education by adopting the best and latest practices in education, and implementing innovation in our instructional practice to provide an impetus and develop students to be worthy leaders and citizens of our nation. Our curriculum promotes confidence, direction and critical thinking, and truly reflects our commitment to excellence and presents our constant endeavour to transform and shape the lives of our students, not singularly in the pursuit of personal excellence but coupled with a social conscience.

*We welcome you to this world of learning waiting to be explored by you!*

**Gunjan Sahni**  
Principal



## About the School

**S**eth M R Jaipuria School, Bansal Campus, a Co-educational school, is one of the first schools on this side of the city to adopt progressive teaching learning pedagogy. We have an aesthetically and comfortably designed school building with well-ventilated spaces for classes as well as activities. Well-equipped laboratories for Physics, Chemistry, Biology and Computers give our learners the learning edge required today. Catering to the needs of today's students is a Learning Resource Centre that connects us to the world of e-Books, the World Wide Web and beyond. At the pre-primary and primary levels our classrooms are theme based to make learning an enjoyable experience for the young ones. All classrooms are equipped and facilitated with smart boards to make learning tech-friendly; our facilitators of learning/ mentors are also tech-savvy individuals with a passion for learning, thereby making the teaching learning process more interactive and friendly. The medium of instruction is English

To ensure holistic development of children, sports and other activities are an integral part of our curriculum. The school provides a lavish playground along with sports facilities and infrastructure for Badminton, Basketball, Football, and Cricket. Activity-based learning equips our students with the skills necessary to survive and succeed in today's world. We stand for fortitude and discipline, honing the skills involved in academics, sports and co-curricular activities. Our aim is to build citizens, India will be proud of!



**HOLISTIC SUBJECTS**  
Specially designed courses on subjects such as Human Unity.



**WORKSHEETS**  
Designed to inspire thinking rather than memorization.



**GROUP DISCUSSIONS**  
Enhancing listening, speaking and exchange of ideas.



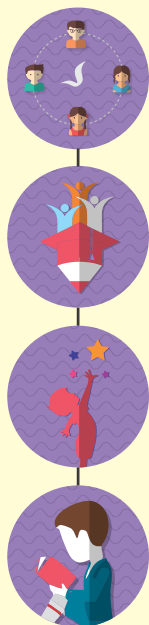
**PROJECTS**  
Learning with hands-on experience.



**SPIRIT OF INQUIRY**  
Developing openness and curiosity.

# I AM

## INTEGRAL EDUCATION CHILD CENTERED LEARNING JOY AND CREATIVITY TRADITIONAL AND MODERN EDUCATION



### *Our Vision*

Our vision is to create a generation of learners who emerge as empowered individuals, armed with the skills to thrive as lifelong learners; learners who will showcase their knowledge with confidence and appreciation, actively contributing to the global community while upholding our school's core values: Sustainability, Possibility, Integrity, Collaboration, and Empathy. In doing so, they become catalysts for positive change.

### *Our Mission*

We are unwavering in our commitment to fostering an environment that nurtures leadership and entrepreneurship, while also encouraging critical thinking and creativity. Our focus on collaboration and responsibility, paired with a dedication to intellectual exploration and human values, guides our learners on their transformative journey of self-discovery within our school.



### **Our Goals**

- To impart integral education with emphasis on moral and spiritual values and character building rooted in Indian culture
- To ensure all-round development of a well-integrated personality under the guidance of dedicated and competent mentors
- To provide training in leadership and experience in self-governance
- To promote the creative potential of children through art, dance, music, and other forms of creativity
- To foster brotherhood and fraternity by special emphasis on national integration
- To create an awareness of international understanding and global citizenship
- To inculcate values like discipline, integrity and dedication to the service of mankind
- To guide students to be the best versions of themselves and ably compete in National and Internal arenas





## INFRASTRUCTURE AND AMENITIES

Seth M.R. Jaipuria School, Bansal Campus is located in a serene environment far from the noise and disturbance of the city. The lush greenery, and aesthetically built school building provide a welcome relief as you enter. The campus is spread over several acres, and boasts of sprawling grounds, flower filled green landscape, spacious classrooms and spaces for different activities. Not only is it a treat for the eyes but welcomes the learners to explore and learn

### CAMPUS

- Aesthetically conceived elegant layout
- 24-hr security (CCTV coverage)
- In-house canteen
- Calm and peaceful learning environment
- Wi-fi equipped
- RO water supply





### LIBRARY

The School library is the hub of intellectual activities:

- More than 5000 books (reading material and reference resources)
- Provision of regular reading sessions for students
- E-Library
- Journals and magazines (regular subscriptions)

### AUDITORIUM

A large spacious, well-equipped auditorium to hold a variety of Indoor literary and cultural activities and programs

### SCIENCE LABORATORIES

- Extensive science labs for Physics, Chemistry & Biology
- Fully equipped to provide experimental foundation for key concepts
- Students are encouraged to 'learn by doing' which kindles their interest visually and kinesthetically
- Labs are designed to enable experiential learning as learners familiarize themselves with experimental apparatus, scientific methods applied, and make careful observations and draw conclusions





## COMPUTER AND MATHS LABS

- LAN connected Computer Lab catering to a 1:1 Student, Computer ratio
- Equipped with all educational software - even in game format for very young learners
- Maths lab designed and equipped to make Maths learning practical rather than theoretical

## DIGITAL CLASSROOMS

- Classes equipped with smart boards
- Teaching with the help of videos, PPT's, animations and other resource materials
- Visually appealing learning



## TRANSPORT

- A fleet of buses and vans
- GPS installed for real time tracking
- SMS facility

## MUSIC LAB

- Vocal and instrumental music specially designed for young school learners
- In-built with our regular curriculum (no extra charges)
- Hands-on experience to play the guitar, piano and other instruments



## PRE-PRIMARY

- Theme based visually appealing classrooms
- 'Home-away-from-home' environment for very young learners
- Learning based on VAK (visual, auditory, kinaesthetic) Techniques
- Focus on building social skills of very young learners

## PLAY FIT

- Play Fit classes for pre-primary and primary students to develop GMS (Gross Motor Skills)
- Students get exposure to Play Fit accessories twice a week



## CLUB ACTIVITIES

Our commitment to the holistic development of students is manifested in the organising of Club Activities at regular intervals, all through the session – indoor clubs and outdoor clubs:

CLUB NAMES	RELATED ACTIVITY
DaVinci	Art
Odeum	Dance and Drama
Chef Alleys	Cooking
Cantantis	Singing (Music)
Inside Out (E)	Literary (Eng)
Inside Out (H)	Literary (Hindi)
Green Groovers	Gardening
Snappers	Photography
Periodistas	Media
We Argon	Science Stream
Harmony Hub	Humanities
Ideate	Business (Commerce)
Salvadores	Sustainable Development
Dribblers	Basket Ball
Morgan's Club	Volleyball
Aikido	Karate
Pitch Rulers	Cricket
Paradis	Yoga
Explorers	Tourism
VIO (Voice It Out)	Debate
Academia Numerorum	Mathematics
Faber Codicis	Coding



## HOUSE ACTIVITIES

A healthy sense of competition is a must and, rising to that challenge even more imperative. The students are divided into four houses - Trail-Blazers (Green), Go-Getters (Yellow), Wave-Riders (Blue), Game-Changers (Red):

- House activities from time to time
- Ensured participation of all students
- Opportunity to hone talent and skill



## BEYOND SCHOOL LEARNING

With the aim of promoting English, Science, Mathematics & Computer Education, we encourage children to take up the

- NASO Olympiad Exams
- SOF Olympiad - IEO, IMO, NSO
- Spell Bee International

Along with these, our learners are motivated to participate in inter-school activities, both, within the city and outside.



## THE JAIPURIA EDGE

The Jaipuria group of schools organises events for the students to participate in and learn:

- Pinnacle - an inter school sports event
- Crescendo - an inter-school literary and cultural events
- Bhavani Bharti - an event especially for testing Sanskrit skills
- JEET - a comprehensive practice test held monthly for board appearing classes
- Benchmark Assessment - held twice a year for grades 3, 5 and 8. Regular practice sessions for the assessment are provided throughout the year
- IDEAL - Integrated study projects for students - a great way to integrate academics with co-scholastics
- Exam Ready - Subject wise board preparation sessions for grades 10 and 12
- Possibility - the in-house Jaipuria publication house that brings out books and study material as per the latest pedagogy put forth by the NEP
- Toondemy - a special application for Pre-primary classes catering to their special learning needs



## PROFICIENT BODY OF MENTORS

We have a team of trained, skilled and seasoned mentors who are constantly empowered with new learning at regular intervals to enable the learners with the learning advantage:

- Induction training – training for the newly inducted teachers to familiarise them with Jaipuria curriculum and methodologies
- UPSKILL – organised by the Jaipuria group every year to scale up teachers' skills
- CBSE Trainings – Generic and subject specific to keep our mentors updated
- Cascade Training – a teacher-to-teacher training module held two times a year
- Focused Training – held every year with a focus on the annual theme, which is incorporated in every aspect of the curriculum
- Quality Assurance – is ensured through a constant process of audit, suggestions, feedback and self-reflection



# ADMISSION PROCESS

## Playgroup to Class IX & Class XI (Science, Commerce & Humanities)

- Minimum age criterion for Pre-Primary -
 

Play Group	2 Yrs+
Nursery	3 Yrs+
Lower Kindergarten	4 Yrs+
Upper Kindergarten	5 Yrs+
I	6 Yrs+
- Admission Form can be obtained on payment of ₹1000/- from Front Desk or Office of Admission Counsellor.
- Date for interaction with the child and parent, written test will be intimated at the time of registration.
- Admission shall be subject to screening by the Admission Committee.
- Payment will be made through school ERP App only.
- To download App from Play Store / Apple store

➔ Search for the ERP Application for Seth M.R. Jaipuria School Bansal Campus

➔ Tap on Sign In

➔ Tap on Sign In with Username

➔ Enter your Username and Password

➔ Tap on Fee Menu

➔ Select Fee and Tap on Pay Now

➔ Select Debit / Credit Card Net Banking or UPI mode and Pay Fee



### CURRICULUM SUPERSTRUCTURE

Yearly plan for teachers to prepare content and process for delivery in the classroom.



### ASSESSMENTS

Holistic assessment. Term end evaluation for future performance.



### LESSON PLANS

Over 15,000 lesson plans from Nursery to Grade 12 with constant review and updating of lesson plans.



### PEDAGOGICAL PROFILES

Summary sheet and set of lesson plans for each subject in every grade.



### LEARNING GOALS

Curriculum is designed such that lessons are taught with an aim to achieve higher order of thinking.

# OUR VALUE SYSTEM



**Focus of the month** a scholastic activity, highlights one pre-designated subject throughout the month. A comprehensive list of activities has been designed, aiming at motivating students to connect to the subject at metacognitive level of learning.



**Value of the month** is a program to develop five core values in students collectively known as SPICE.

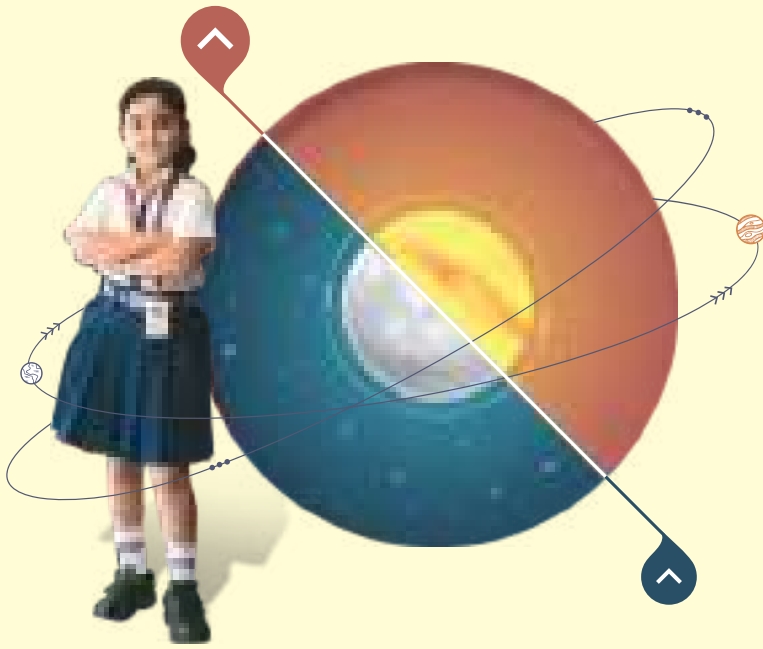
- S** stands for Sustainability
- P** stands for Possibility
- I** stands for Integrity
- C** stands for Collaboration
- E** stands for Empathy



The interdisciplinary project is theme based learning which enables students to see the links between subject areas and integrates methods and frameworks from more than one academic discipline to examine a topic.



**AIL** is a cross-curricular approach to teaching and learning of a subject with the help of visual and performing arts. Visual arts includes drawing, painting and craft. Performing arts includes theatre, music and dance.



I AM BETTER  
**TODAY**  
I AM BRIGHTER  
**TOMORROW**  
I AM JAIPURIA

I AM WHAT  
**I CHOOSE**

TO BE A

- DREAMER
- DOER
- ACHIEVER
- EXPLORER
- CREATOR
- INNOVATOR
- LEADER



— SETH M.R. —  
**JAIPURIA  
SCHOOL**  
BANSAL CAMPUS, SITAPUR ROAD  
— LUCKNOW —

## Seth M.R. Jaipuria School Bansal Campus

- 📍 NH 24, Behind Sewa Hospital, Sitapur Road, Lucknow
- 📞 87569 95172
- 📞 87569 95171, 72338 09120
- ✉ [info.sprlucknow@jaipuriaschools.ac.in](mailto:info.sprlucknow@jaipuriaschools.ac.in),  
[admission.sprlucknow@jaipuriaschools.ac.in](mailto:admission.sprlucknow@jaipuriaschools.ac.in)
- 🌐 [www.jaipuriabansalcampus.com](http://www.jaipuriabansalcampus.com)
- 📘 <https://www.facebook.com/jaipuriabansalcampus>